



# YOSEMITE RUSH CREEK LODGE

## LOOKOUT POINT HIKE

This hike is a short trail that climbs steadily, but not steeply, to the point. Lookout Point provides distant partial views of the Hetch Hetchy Reservoir, O’Shaughnessy Dam, and Wapama Falls. The point has a 360-degree panoramic view of the surrounding country. To the west you see the land sinking down to the Central Valley; to the east you see it rising to the Sierra crest. Yosemite, in theory, never closes, but the Hetch Hetchy area is an exception. There’s only one road in, and the gates close at night. Please check with the Recreation Desk for entrance hours.

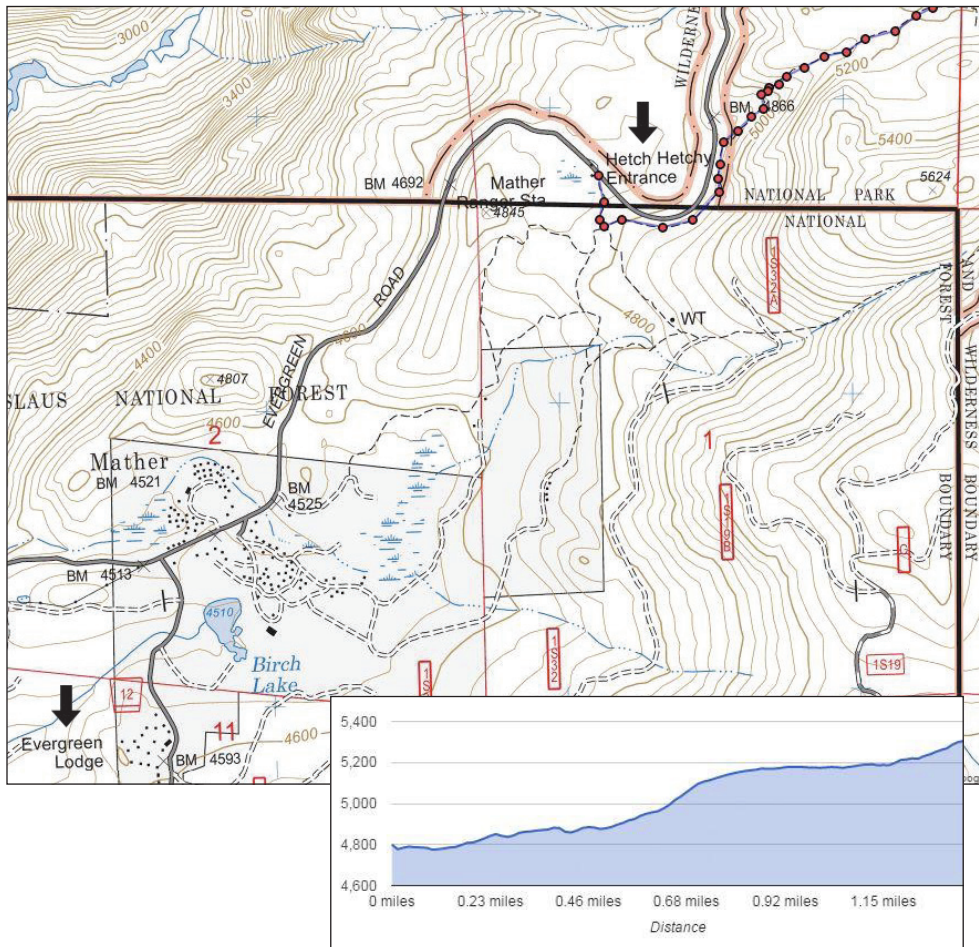
## DETAILS

**Hiking Distance:** 2.8 miles (4.5 km) Out & Back

**Hiking time:** 1 to 2 Hours

**Elevation Change:** 500 feet (150 meters)

**Trailhead:** Hetch Hetchy Ranger Station



**Note:** Strollers & Dogs are not permitted off pavement in Yosemite National Park and Camping without a permit is also illegal. If you’re planning to go into the water, please wait until after the spring runoff. Don’t weigh just the water depth, temperature, and current when you’re calculating the danger level - remember that river beds are often slippery as well.

This information sheet is not meant to be a substitute for a hiking map and hiking can be dangerous please use caution and be safe!